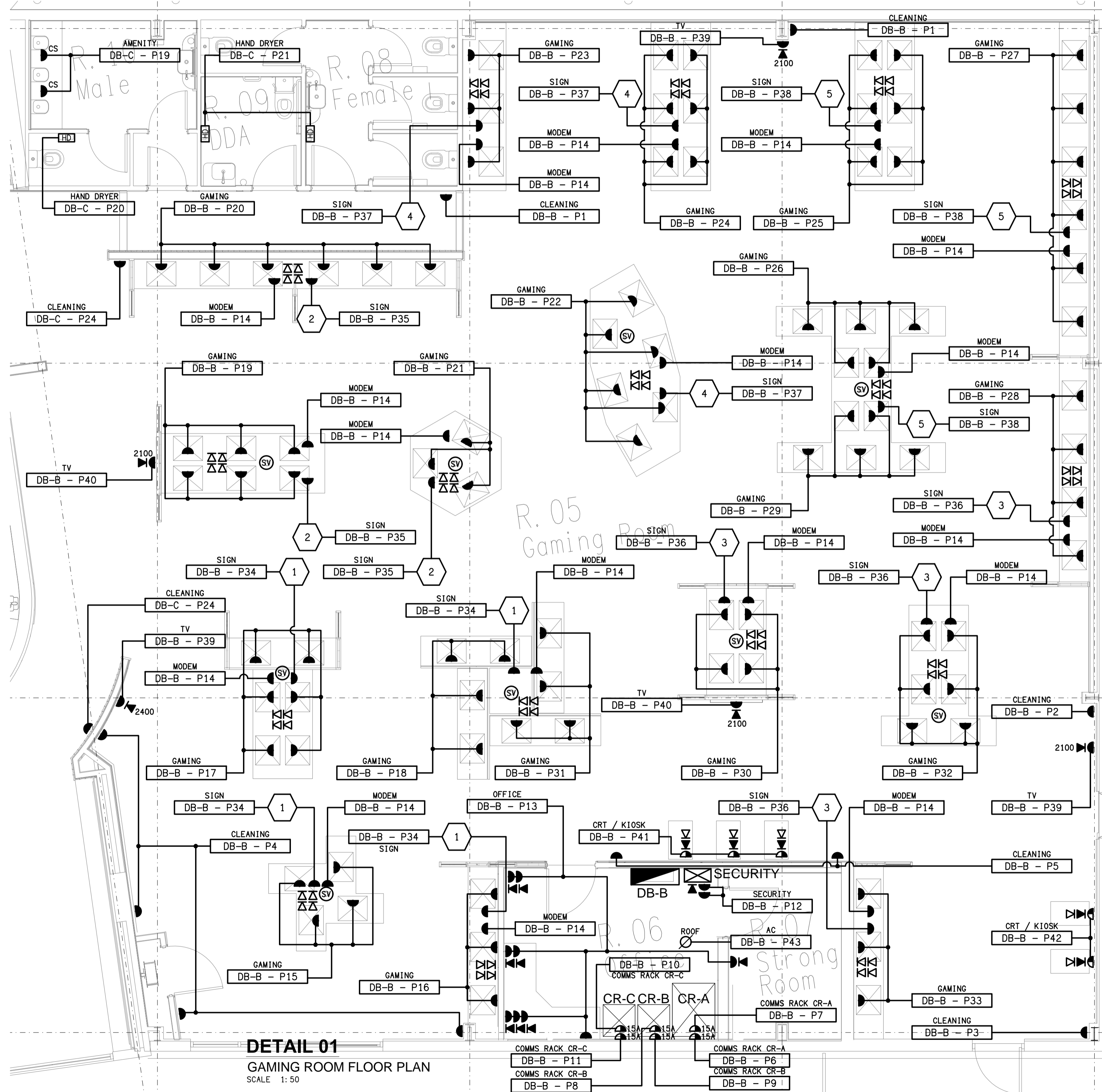
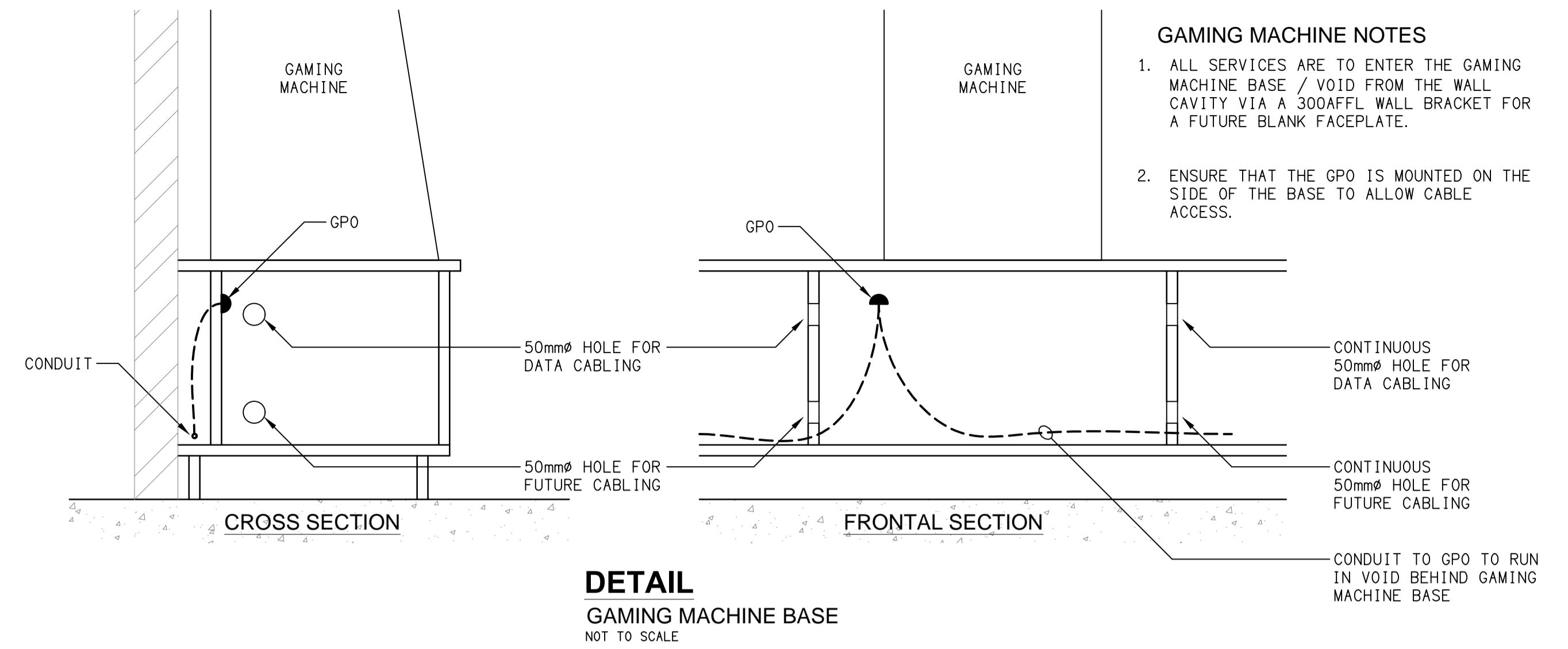


KEY PLAN

NOTE:
REFER TO DRAWING C2931a-E07.dwg FOR THE ADDITIONAL GAMING ROOM FIBRE PLAN.

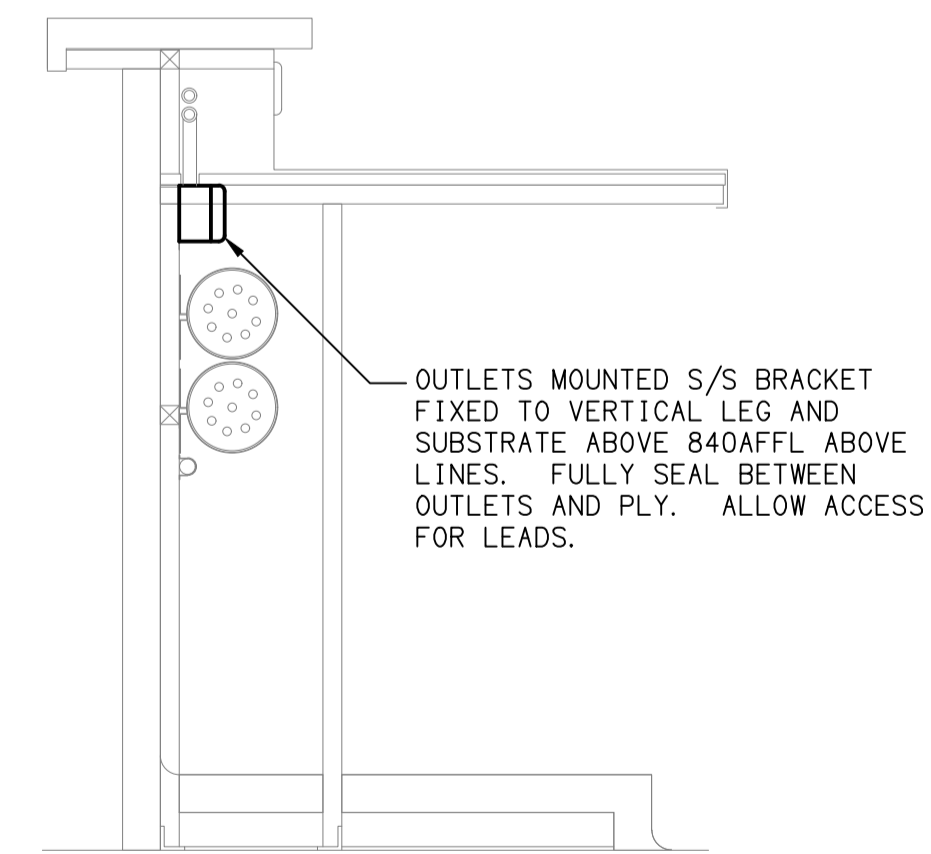


DETAIL 01
GAMING ROOM FLOOR PLAN
SCALE 1:50

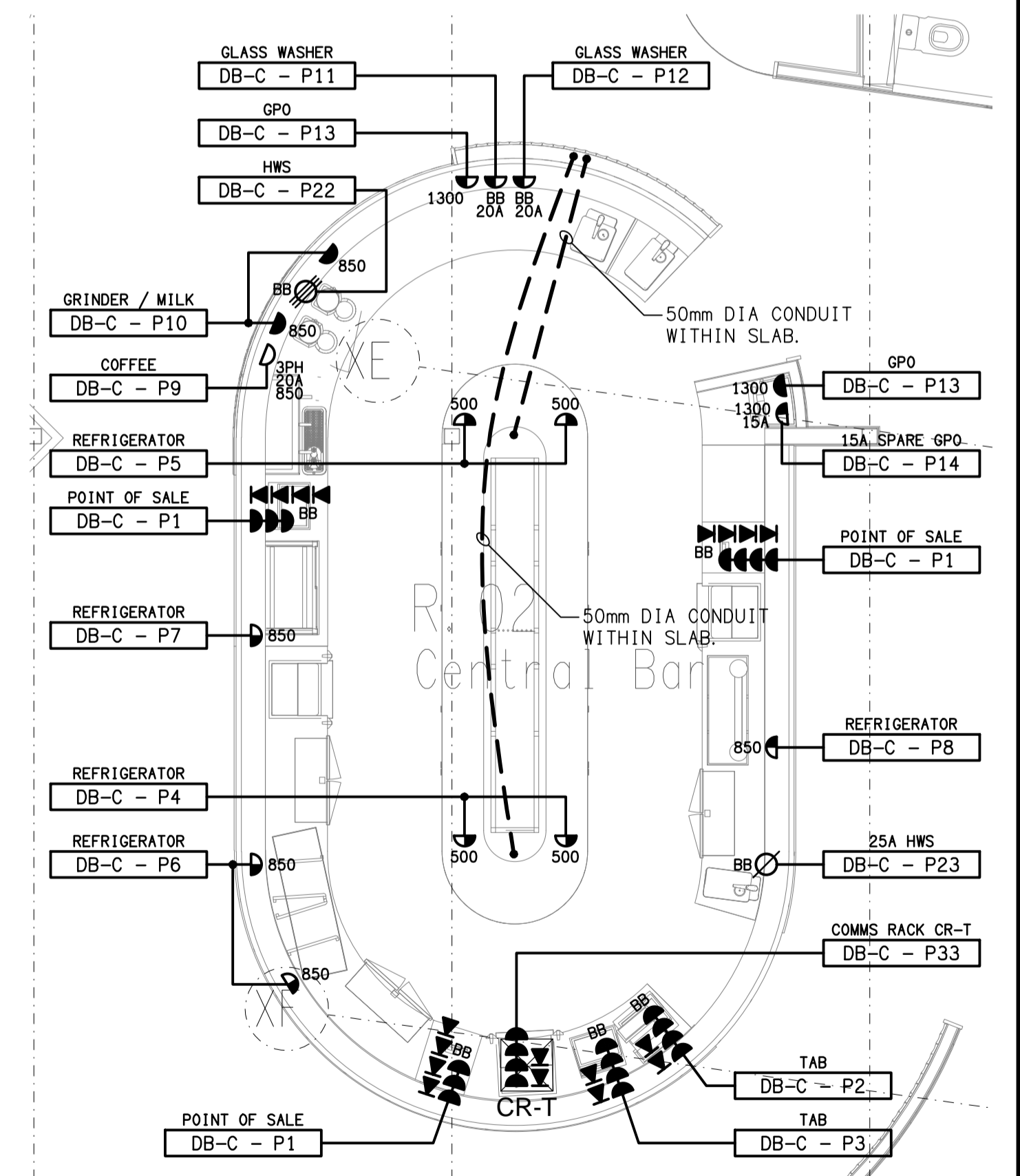


DETAIL
GAMING MACHINE BASE
NOT TO SCALE

- GAMING MACHINE NOTES**
1. ALL SERVICES ARE TO ENTER THE GAMING MACHINE BASE / VOID FROM THE WALL CAVITY VIA A 300AFFL WALL BRACKET FOR A FUTURE BLANK FACEPLATE.
 2. ENSURE THAT THE GPO IS MOUNTED ON THE SIDE OF THE BASE TO ALLOW CABLE ACCESS.



DETAIL 03
TYPICAL BAR OUTLET MOUNTING
SCALE 1:10



DETAIL 02
CENTRAL BAR FLOOR PLAN
SCALE 1:50

ELECTRICAL DESIGN GROUP BRISBANE
PTY LTD
ACN 092 710 793

THE COPYRIGHT OF THIS DRAWING
REMAINS THE PROPERTY OF THE
ELECTRICAL DESIGN GROUP.

USE FIGURED DIMENSIONS
IN PREFERENCE TO SCALE.

ALL DIMENSIONS TO BE
VERIFIED ONSITE.

ELECTRICAL DESIGN GROUP
ELECTRICAL BUILDING SERVICES CONSULTANTS
BRISBANE GOLD COAST

P.O. Box 15, Sherwood Q.4075
Phone: (07) 3278 4375
Email: brisbane@edg.net.au
Web: www.edg.net.au

PROJECT:
VICTORIA POINT SHARKS SPORTING CLUB

325 COLBURN AVENUE, VICTORIA POINT, QUEENSLAND

B	CONSTRUCTION	11/09/2023
REV.	DESCRIPTION:	DATE:

DRAWING:
ELECTRICAL SERVICES
GAMING ROOM & CENTRAL BAR
FLOOR PLANS

SCALE:
1:50

AT A1

PROJECT NO:
C2931a

DRAWING NO:
E03

REVISION:
B